

# Sandhill

3,172 A/C Sq. Ft. | 4-5 Bedrooms | 2-4 Full Baths | 0-1 Half Bath



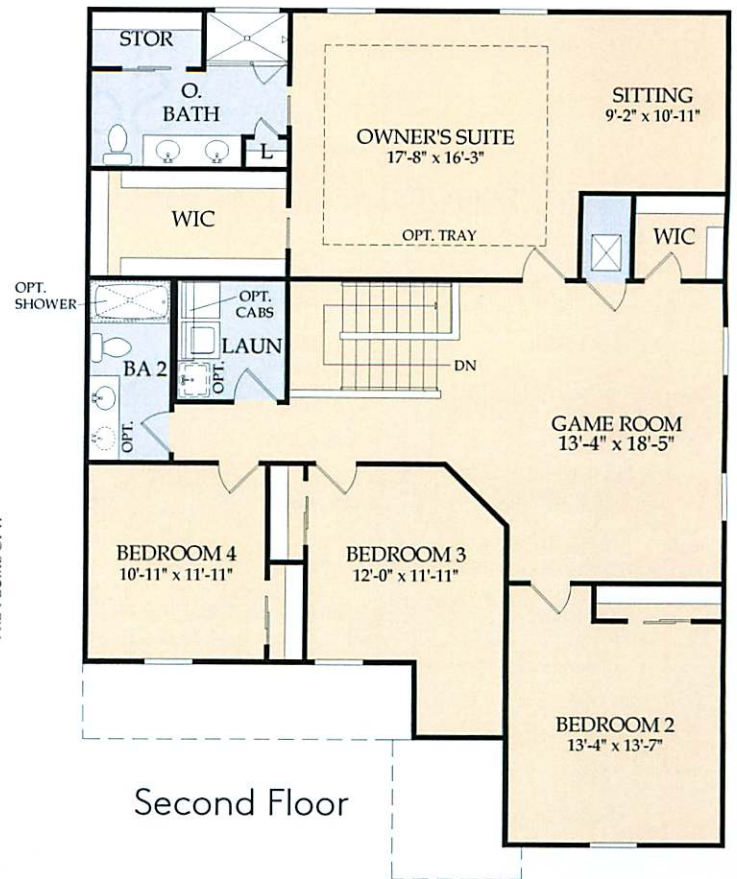
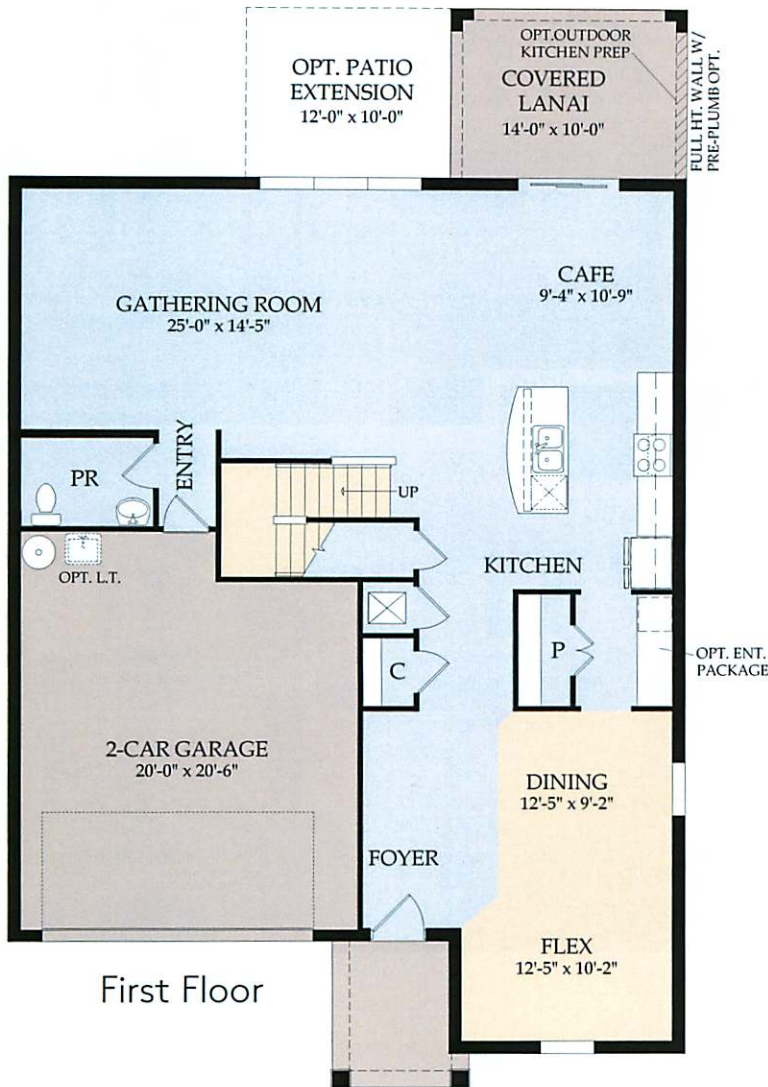
## Manor Series





# Sandhill

- 3,172 A/C Sq. Ft.
- 4-5 Bedrooms
- 2-4 Full Baths
- 0-1 Half Bath



\*Elevation FM2B shown. Room dimensions, square footage and window sizes and locations may vary based on elevation selection.

Visit [pulte.com/theplace](http://pulte.com/theplace) to access our interactive floor plan online to further customize the options available for this home design, such as:

- Den
- Additional flex room
- Extended covered lanai
- Extended kitchen island
- Pocket sliding glass doors
- Tub upgrade at owner's bath













## 10-Year Limited Structural Warranty

We won't just build you a new home. We'll also stand behind it.

Pulte homes are built for life and the way you live it. Peace of mind comes from the thoughtful Life Tested® design, quality craftsmanship, and a warranty you can rely on.

### WARRANTY HIGHLIGHTS

**10** year coverage on structural elements of the home

**5** year coverage on various types of water infiltration and internal leaks

**2** year coverage on the workability of plumbing, electrical, HVAC, and other mechanical systems

**1** year coverage on materials and workmanship

**Warranty is transferable**

Warranties are transferable to subsequent owner who takes title within the applicable warranty period. Information above is intended only to highlight certain aspects of the warranty. Terms, conditions, exclusions, and limitations apply. Warranty is based on Performance Standards criteria that are set forth in the full warranty. A complete description of warranty terms, conditions, exclusions, and limitations is available at <http://www.pulte.com>. 10-year structural warranty covers: footings, bearing walls, beams, girders, trusses, rafters, bearing columns, lintels, posts, structural fasteners, subfloors, and roof sheathing. The warranty description set forth above does not describe or apply to homes in California or New Jersey. The photograph depicts a model containing features or designs that may not be available on all homes. This material shall not constitute a valid offer in any state where prior registration is required or if void by law. Life Tested® is a registered trademark of PN II, Inc. © 2017 Pulte Home Company, LLC. All rights reserved. 4/2017

