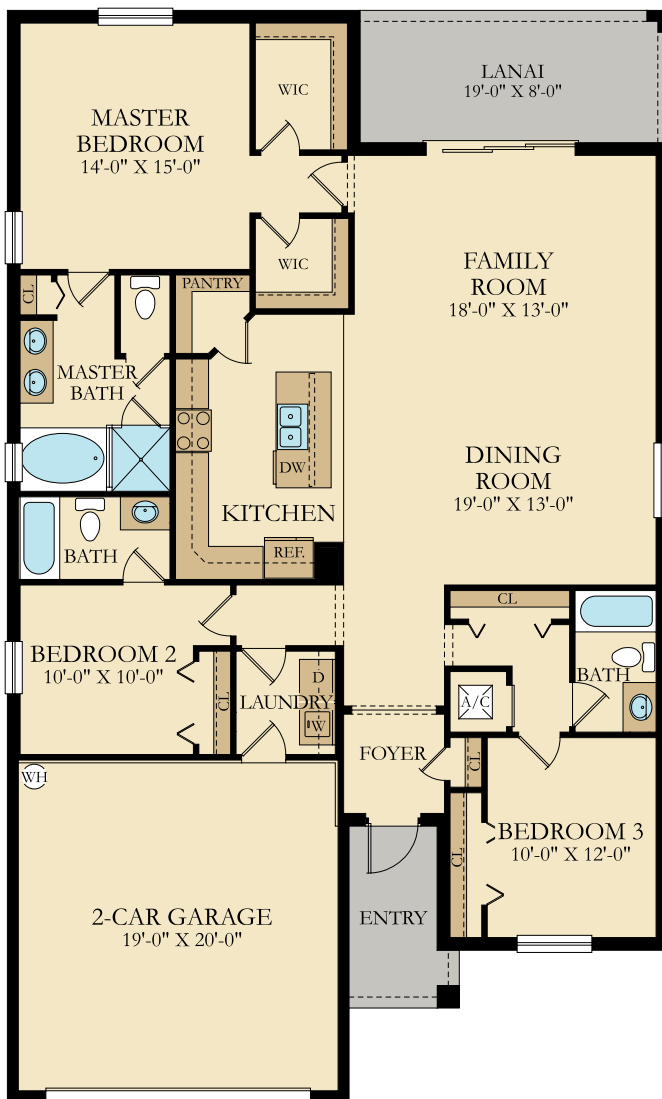




# VENICE

3 Bedrooms | 3 Baths | Family Room | 2-Car Garage



1,849 Sq. Ft.	Living A/C
63 Sq. Ft.	Entry
149 Sq. Ft.	Lanai
424 Sq. Ft.	Garage
<b>2,485 Sq. Ft.</b>	<b>Total</b>



Elevations of a home may vary and we reserve the right to substitute and /or modify design and materials, in our sole opinion and without notice. Please see your actual home purchase agreement for additional information, disclosures and disclaimers related to the home and its features. Plans are artist's renderings and may contain options which are not standard on all models. Lennar reserves the right to make changes to plans and elevations without prior notice. Stated dimensions and square footage are approximate and should not be used as representation of the home's precise or actual size. Any statement, verbal or written, regarding "under air" or "finished area" or any other description or modifier of the square footage size of any home is a shorthand description of the manner in which the square footage was estimated and should not be construed to indicate certainty. Garage sizes may vary from home to home and may not accommodate all vehicles. Visit Lennar.com or see a Lennar New Home Consultant for further details and important legal disclaimers. This is not an offer in states where prior registration is required. Void where prohibited by law. Copyright © 2017 Lennar Corporation. Lennar, the Lennar logo, Everything's Included, the Everything's Included Logo, Next Gen and the Next Gen logo are U.S. registered service marks of Lennar Corporation and/or its subsidiaries. CGC1507191, 07/17.

